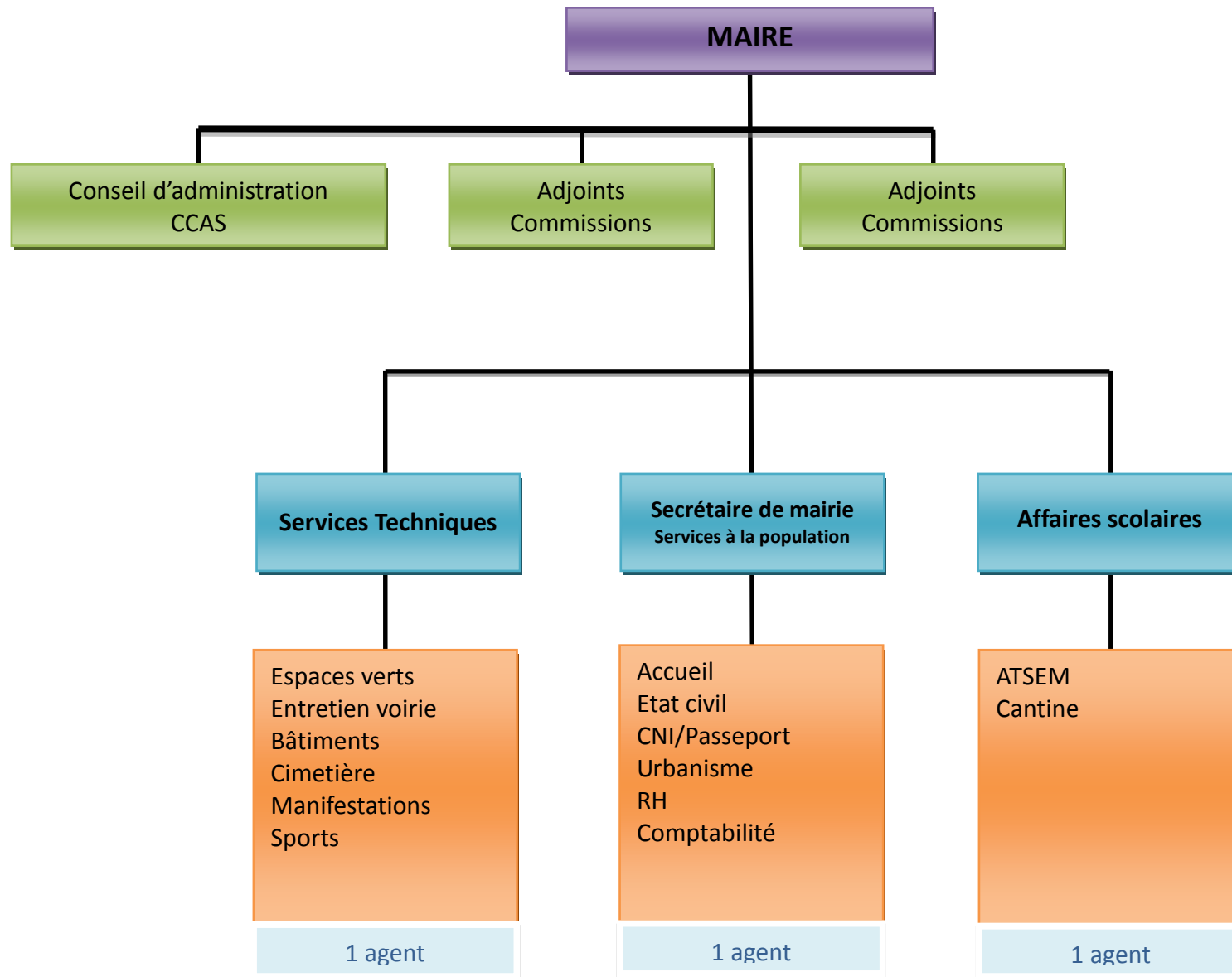
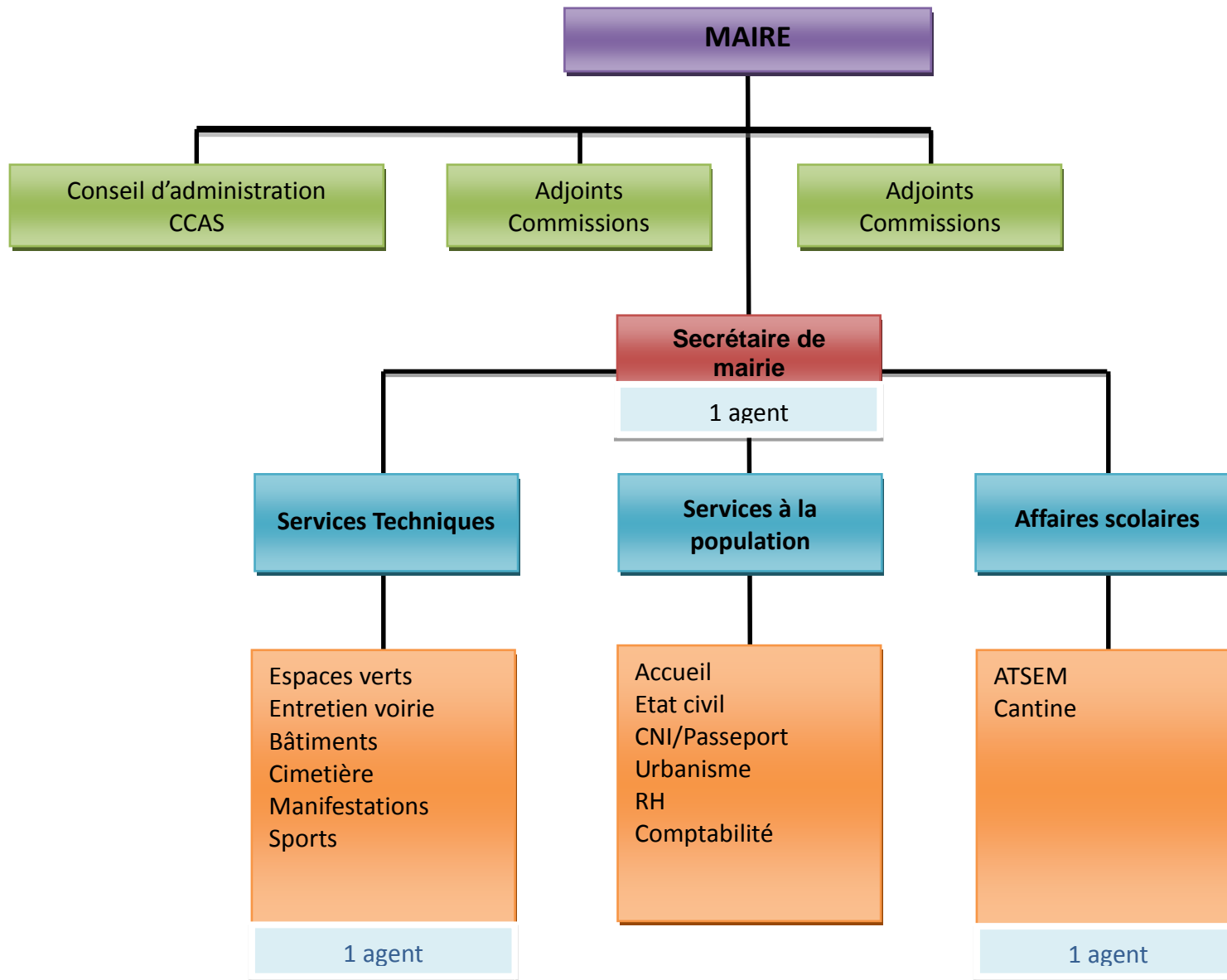


MODELES TYPES D'ORGANIGRAMMES

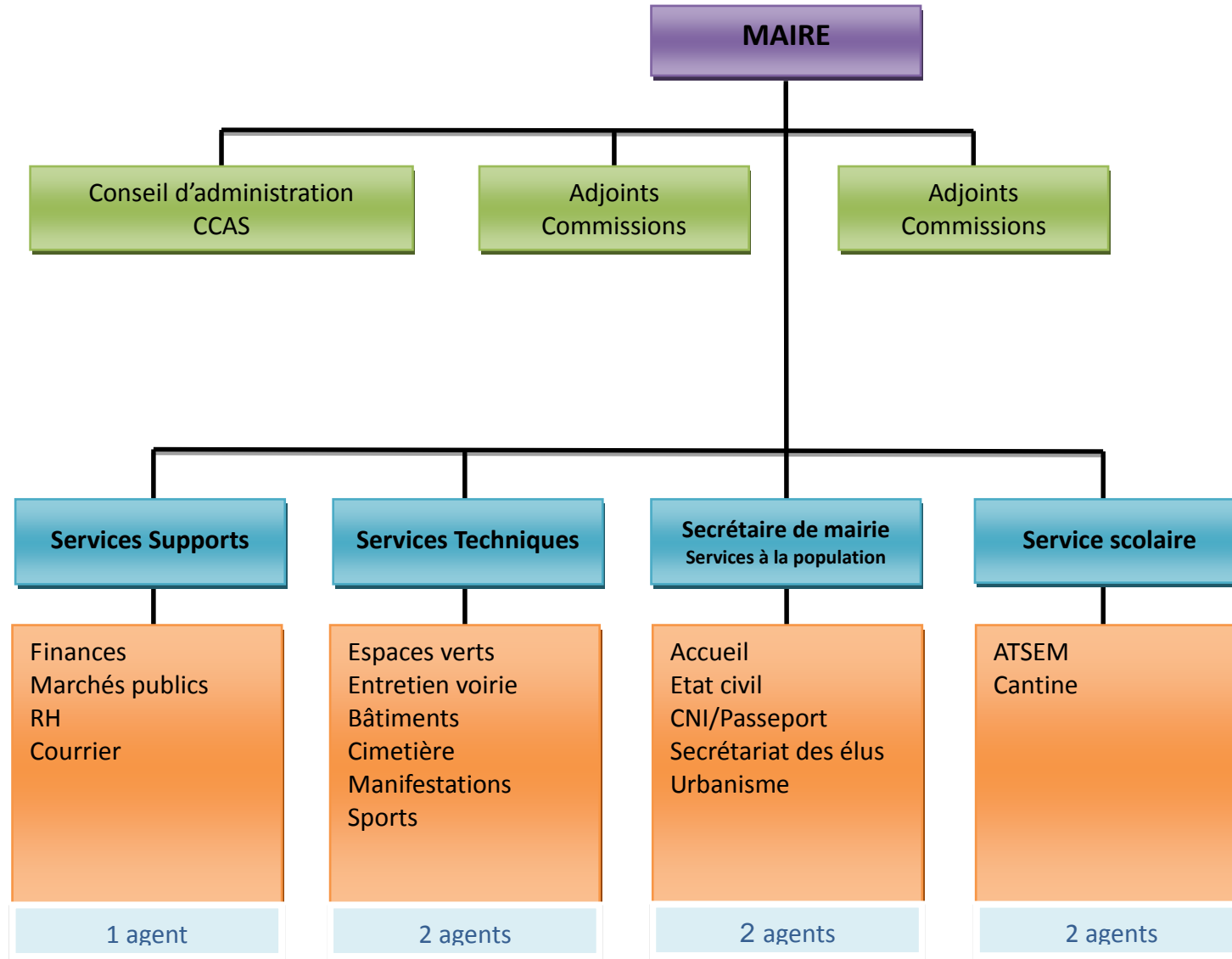
COMMUNE EMPLOYANT 3 AGENTS
(250-500 habitants)



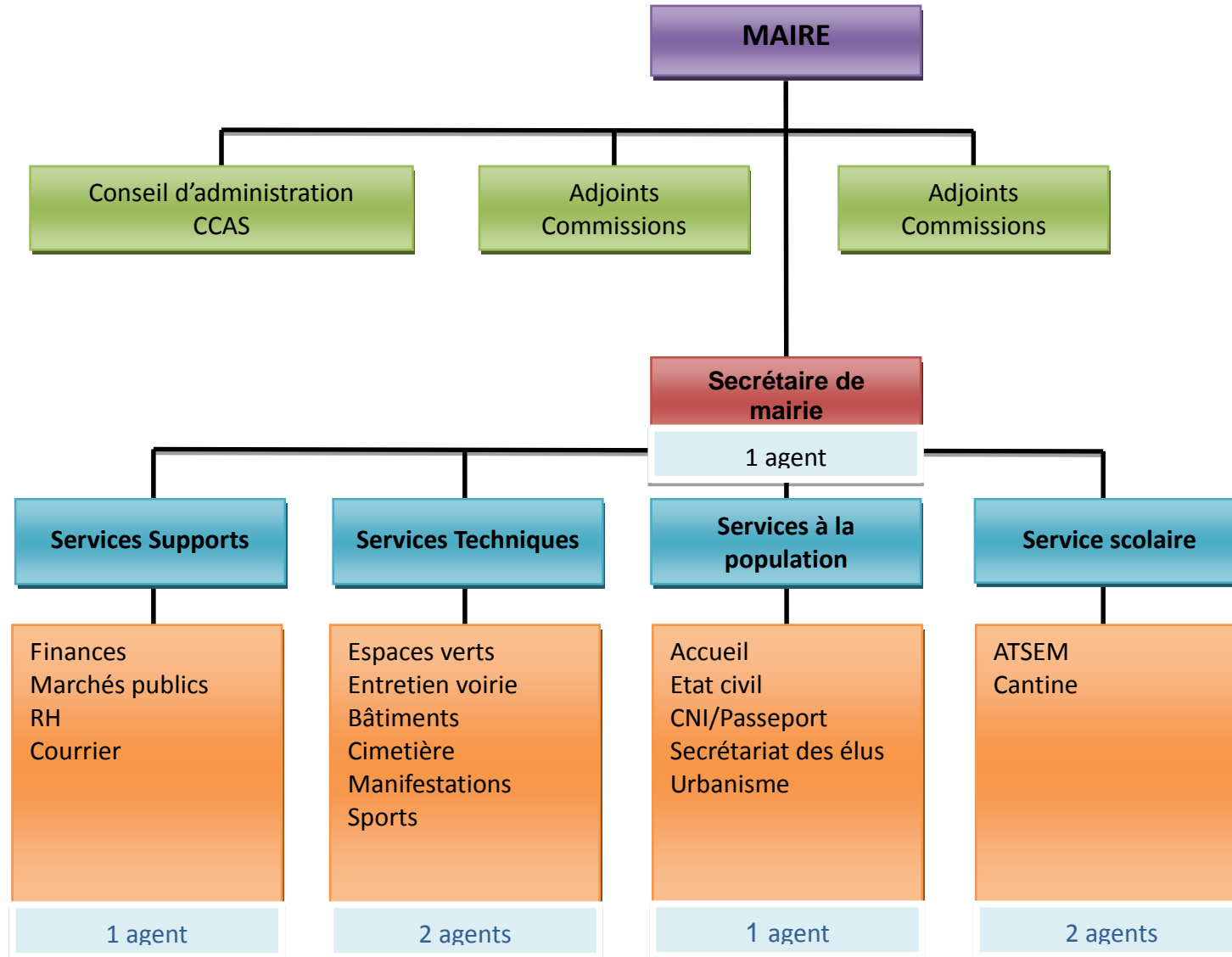
COMMUNE EMPLOYANT 3 AGENTS
(250-500 habitants)



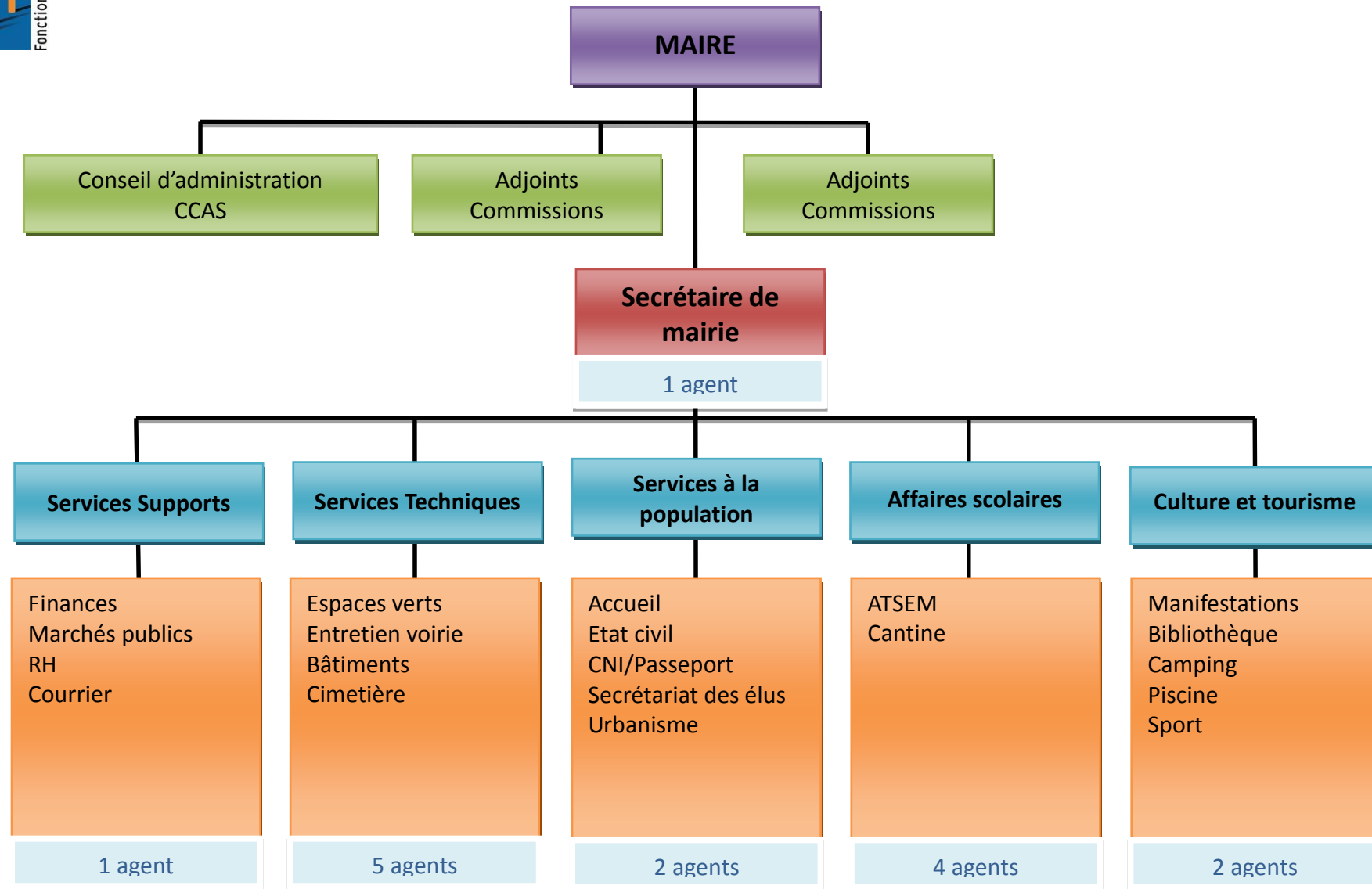
COMMUNE EMPLOYANT 7 AGENTS
(500-1000 habitants)



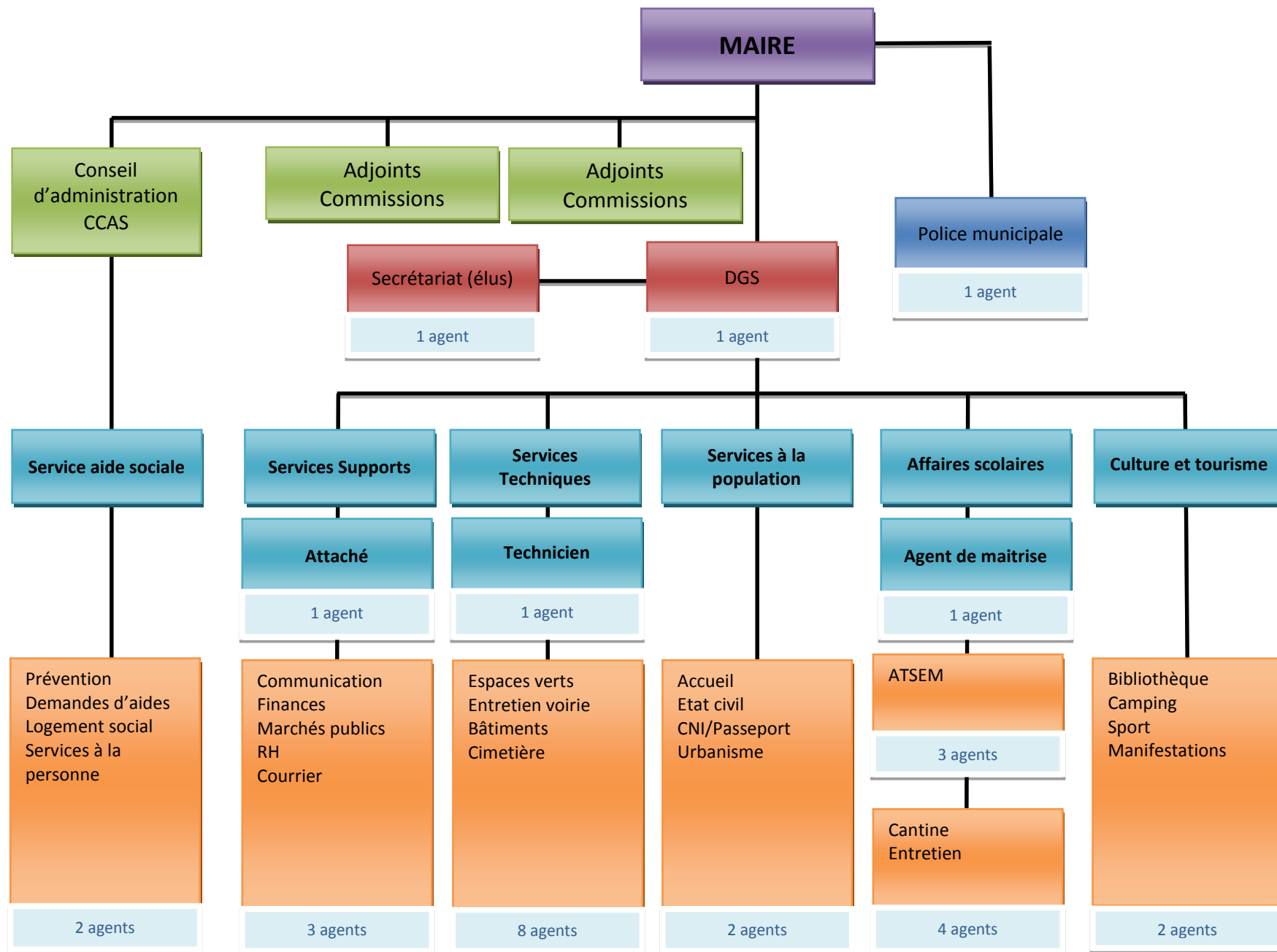
COMMUNE EMPLOYANT 7 AGENTS
(500-1000 habitants)



COMMUNE EMPLOYANT 15 AGENTS
(1000-2000 habitants)



COMMUNE EMPLOYANT 30 AGENTS
(2000-3000 habitants)



COMMUNE EMPLOYANT 50 AGENTS
(3000-5000 habitants)

